



VEHICLE CLUB
Wellington

1971–2011

40 years of four wheeling in the capital!

**Cross Country Chronicle
February 2011**



The Official Magazine of

The Cross Country Vehicle Club (Wellington) Inc

PO Box 38-762, Te Puni 5045, Wellington

www.ccvc.org.nz

Your Total Tyre Shop in a Van



0800 89 73 72

Service
Price

0274 60 90 36

Convenience

**GET YOUR TYRES FULLY FITTED
AND BALANCED WHERE AND
WHEN YOU WANT**

For Other Services and Information

www.tyres2u.co.nz

Cross Country Vehicle Club (Wellington) Inc

PO Box 38-762

Te Puni 5045

Wellington

www.ccvc.org.nz



VEHICLE CLUB
Wellington

The club meets at 7:30pm on the 2nd Wednesday of each month
at the Petone Working Men's Club, Udy Street, Petone.

Position	Name	Home Phone	Work Phone	Cellphone	Email
Club Officers					
President					
Vice President					
Immed Past President					
Secretary					
Treasurer					
Club Captain					
General Committee Members					
Driver Training Officer					
Entertainment Officer					
Membership Officer					
Land Access Manager					
New Members Officer					
Newsletter Editor					
Publicity Officer					
Radio Officer					
Safety Officer					
Trip Coordinator					
Competitions Officer					
NZ4WDA Delegate					
Appointments and Other Useful People					
Archivist					
Asset Manager					
Assistant Trip Coordinator					
Club Night Photo's					
Club Recovery					
Help desk					
Membership Database					
External Search & Rescue					
Track Maintenance					
Trophy Officer					
Webmaster					
Welfare					
<u>CCVC Life Members</u>					
Tom Adams	Graham Barr	George Bean (Deceased)	Leith Bean	Peter Boniface (Deceased)	
Stuart Brown	Andy Cockroft	Owen Farghar	Mike Gall	John Hughes	
Bob Jeffery (Deceased)	Heather Jeffery	Ron Johnson	Steve Lacey	Colin Landy	
Phil Lewton	Vern Lill	Bruce Mulhare	Raynor Mulhare	Ron Oliver (Deceased)	
Peter Osborne	Ross Perkins	Grant Purdie	Tony Street	Ron Wadham	

WHEN HELP IS NEEDED

Should any members fail to return from any outing, four wheel drive or otherwise, whether as a club member or as a private individual, the following person/s should be contacted in the first instance:

Anthony Reid 973 8262 or 027 273 6579 or 021 061 1831

Morris Jury 566 6197 or 021 629 600

Gavin Holden 478 4666 or 027 249 1959

Table of Contents

Cover	I hope the fish are worth the effort catching them! (thanks Ralph)
P. 3	Club Officers, Committee Members
P. 4	Help, Index, Editorial Rambling
P. 5	Safety Inspectors, National Events
P. 6	Club Notices, Sub Committees
P. 7	Trials Calendar, 4x4 National Park
P. 8	Presidents Piece
P. 9	Club Clothing Order Form
P. 12	CCVC First Club Outing
P. 14	From the archives
P. 15	Landcruiser's 60th
P. 18	Club Calendar



Editorial Ramblings

WANTED: Society Gossip, Scandal, Rumour, and if all else fails, NEWS! Photos also very welcome

Hi there and welcome back to another year - an eventful year as it is the 40th anniversary of the club in June, quite a milestone I think and one worthy of celebrating, but more on that later on in the year.

As you will see we have made a few changes to the magazine to mark the anniversary, and during the year I will include something from the archives each month.

There are lots of tagalong trips coming up in March so maybe if members go on these we may get some trip reports - always good to hear about different places.

Alan!

We (CCVC) have been advised by the Petone Working Men's Club that everyone who is not a member of the Petone Working Men's Club **MUST** sign in when they enter the club, including CCVC members attending club nights, meetings, etc.

This is standard procedure for licensed clubs and it is a legal requirement that this be done so please ensure you sign in as a visitor whenever you attend CCVC events at the Petone Working Men's Club (if you are not a member of PWMC of course).

It is very important that we comply with their request if we wish to maintain the good relationship we have with them.

MAGAZINE CONTRIBUTIONS

This is your magazine so it can only be as good as the contributions you make!! We need any articles, trip reports, technical items, "How-to's", etc to be in the hands of the editor by the end of each calendar month.

Please email to newsletter@ccvc.org.nz or post to 34a Hine Rd, Wainuiomata or fax to 04 914 8366.

DISCLAIMER: The opinions expressed in this magazine are those of the contributors and not necessarily those of the club, it's executive or committee members. Publication of maintenance techniques or mechanical modifications should be weighed against generally accepted procedures and the Club should not be considered an authority in this area. The mention of products, service procedures or service organisations herein does not constitute endorsement by the Club, the Cross Country Chronicle or it's Editor.

Vehicle Inspectors



Dayal Landy

Gold Coast Mechanical
2 Epiha St, Paraparaumu
Ph. 04 902 9244

Antony Hargreaves

Epuni Motors 1987 Ltd
2 - 6 Hawkins St, Lower Hutt
Ph. 04 569 3485

Dave Bowler

Bowler Motors Ltd
11 Raiha St, Porirua
Ph. 04 237 7251

Grant Guy

Richard Blair

G Guy Motors
61-63 Thorndon Quay, Wellington
Ph. 04 472 2020

Carl Furniss

Wellington 4WD Specialists
26 Hawkins Street, Lower Hutt
Ph. 04 976 5325

Jim Johnson

Ph. 04 938 9404
or 021 389 404

NB: Please remember to call and make an appointment before turning up for an inspection!



We are trying to find out more details on the history of our club trophies and awards - things like previous winners, where the trophy came from, what it was originally given out for, etc.

So if you know anything that we don't know (see trophy page on the website to see what we do know) then please get in touch with a committee

member or drop an email to:

newsletter@ccvc.org.nz

National Events

Feb 18: National Trials Round 4 Karapiro, South Waikato 4WD Club.

Feb 19: Tinui School 4WD Trek One day fundraiser easily accessible to Wellington/Manawatu & the Wairarapa/hawkes bay regions. Takes in normally closed Castlepoint Station & surrounds. Incredible scenery & hospitality. Contact Tony & Pattie O'Boyle on 06 372 6859.

Mar 05-07: National Park 4x4 Weekend Explore 4WD opportunities whilst enjoying the hospitality of The Park Travellers Lodge. Check the NZFWDA forum for more details.

Mar 05-06: Waimiha Safari Organised by the new Sulphur City 4Wheelers in aid of the Waimiha community which is south of Benneydale. Two day event with historical interest, with some tuff tracks but generally just exploring country that nobody usually gets into. Costs \$150 per vehicle, and enquiries to Dave Umbers at theumbersfamily@farmside.co.nz or 07 333 1809 or 027 452 1480.

Mar 11-13: Hereworth School Fundraiser In conjunction with Hillseekers 4WD this trip covers spectacular central Hawke's Bay coastal country. A family affair, it will return to the same campsite each night & includes all meals. Cost is \$400 per vehicle (2 people), extra adults \$180, kids 12 & under \$80. Contact Mark Warren at waipari@xtra.co.nz or Pete Sutherland on 021 244 4013 or register online at www.hereworth4wd.co.nz

Mar 12-13: Hukerenui School 4WD In conjunction with the Whangarei Four Wheel Drive Club a family event for drivers of all experience. Contact Alan or Jill on 09 433 9912 or a.jmoscrip@xtra.co.nz

Mar 12-13: Te Awamutu Rotary Club 4WD Based at Pirongia with scrutineering 11 March. Contact David Samuel on dsamuel@clear.net.nz or 07 871 9651 (not after 9pm). For more details see www.teawamuturotary.org.nz.

Mar 13: National Trials Round 5 Colyton, organised by the Competition Committee.

Mar 19-20: OSC 4WD Safari Otamatea Christian School PTA fundraiser, two hours north of Auckland with tracks through farmland for family to advanced trucks. \$170 per vehicle includes driver and one passenger. Camping available. Contact Philip or Julia Leaf on 09 431 6622 or pjleaf@clear.net.nz

Mar 20: Wairakei School 4x4 Scenic farmland with fun and challenges on Kiwitahi Station (near Taupo). \$65 per vehicle, with details from Kelvyn on 07 378 7952 or Roger on 07 377 1337

Some details in this column appear courtesy of Cathy Parker, publisher of the New Zealand 4WD and Sport-vehicles magazine. Potential participants should contact the event organiser; CCVC cannot take responsibility for any changes or inadvertent inaccuracies.



Club Sub-Committees

The club has the following sub committees running currently (convenor named first, where applicable):

- **60k:** Terence Broad, Ron Johnson, Bruce Mulhare, Antony Royal, John Vruink, Mark Wolstenholme
- **Club Recovery:** Anthony Reid, Morris Jury, Rodney Bracefield, Gavin Holden
- **Competition:** Ash Senior
- **Deadwood:** Roger Seymour
- **Emergency Comms & Radio:** Ian Hutchings, Grant Purdie, Rodney Bracefield, Jim Johnson, Phil Lewton, Rick Smith, John Vruink, Mark Wolstenholme, Murray Wills, Steve Mercer, Tony Brown
- **Land Access:** Grant Purdie, All trip leaders
- **Police Search & Rescue (SAR):** Jim Johnson, Gavin Holden
- **Safety:** Murray Taylor, Carl Furniss, Peter King, Steve Mercer
- **Trip Leaders Forum:** Charles Odlin, All trip leaders
- **Web Project:** Murray Wills, Grant Purdie, Stefen Cook, John Parfitt, Mike Stevens, Mark Wilson

The club also has the following external organisation liaison people:

- **Akatarawa Recreational Access Committee:** Ralph Dobson, Charles Odlin & Grant Purdie
- **Dept of Conservation Head Office Liaison:** Paul Adams
- **Foxton Beach Coast Care:** Bruce Mulhare, Grant Purdie, Russell Stevens & John Vruink
- **Friends of Belmont:** Stewart Burrell
- **Greater Wellington Regional Council:** Grant Purdie
- **Horowhenua District Council:** Grant Purdie
- **Tread Lightly!:** Ralph Dobson
- **Wellington City Council:** Grant Purdie & Barry Insull



Club Email Addresses

Are you a new member? Do you get the News emails from the club? Do you have access to the club's web-site memberzone? If not then have a word with a committee member as these are all ways in which the club communicates with it's members. Some useful email addresses are:

- Webmaster@ccvc.org.nz (general web site queries)
- Lists@ccvc.org.nz (person who administers the list servs)
- Trips@ccvc.org.nz (Trip Coordinator)
- Newsletter@ccvc.org.nz (to send stuff to the newsletter editor)
- Database@ccvc.org.nz (membership database administrator)
- Access@ccvc.org.nz (Chairman of the Land Access Management Committee)
- NZFWDAdelegate@ccvc.org.nz (NZ Four Wheel Drive Association delegate)
- Treasurer@ccvc.org.nz (club treasurer)
- Welfare@ccvc.org.nz (club welfare officer)
- David.coxon@xtra.co.nz (Club night photo submission)
- Helpdesk@ccvc.org.nz (any general questions)

Akatarawas Trip Report - 30th December 2010

After some heavy rain a couple of days earlier, Thursday 30 December was sunny and warm, perfect for one last trip into the Akas for 2010. A small group of 4 Toyota's (Grant, Phil, Oliver, Dennis) and one Land Rover (John) followed trip leader Grant Purdie on some interesting tracks, many blocked by fallen trees due to the heavy wind and rain earlier in the week.

We meet as usual on the Haywards/Moonshine corner and after the briefing and air down at Cooks Road Gate, we headed off up Puketiro Road and turned right into Cleary's Road. Cleary's was an easy drive to join Junction Hill Road. We came to a very sharp right-hander where we all got taken by surprise, as it's only as you come around it you realise the track suddenly becomes very steep, rutted and slippery. Then quite a gnarly climb.

Later, Grant almost disappeared into a deep muddy water hole only extracting himself using both lockers and

(Continued on page 7)

Trial Calendar 2009-2010 Season

Round	Club	Date	Zone	Area
Rd 4	South Waikato 4x4 Club	19 February 2011	NZ	Karapiro
Rd 5	Competition Committee	13 March 2011	CZ	Colyton
Rd 6	Mt Egmont 4WD Club	23 April 2011	CZ	Taranaki (FINAL)



Competition Committee 2010-2011

(Continued from page 6)

after going backwards and forwards a few times. A different line to the right was navigable and was immediately followed by fearsome ruts and a steep climb.

From Junction is was back onto Clearys. We continued along Cleary's to the Rimu/Toi Toi Rd junction where we turned around and did Cleary's again in reverse (not gear stupid).

It was lunch time so we found a sheltered sunny spot near the top of Hydro Road and enjoyed a sandwich and discussion on tyres, a subject involving as many opinions as there are tyres and people, and that could have consumed the rest of the day. Packed up, we headed along Puketiro Rd again and down to Dick's Yard. This was an area I had not been and from the valley floor there are two tracks out; we took the more difficult. The track out was steep and included many deep ruts requiring careful placement and plenty of momentum. Even-

(Continued on page 8)

4x4 National Park

[Home](#) [Feedback](#) [Site Map](#)

News



Welcome to the 4x4 National Park 2011 event site.



The two previous 4x4 National Park events have shown that this region offers some wonderful scenery and 4x4 driving opportunities, as well as contributing to the local economy and to community facilities, such as the National Park Playcentre and the National Park community hall restoration project.

The 2011 4x4 National Park event will take place over the weekend of 5/6 March and will be based again at The Park Travellers Lodge in National Park.

New Zealand Four Wheel Drive Association (NZFWDA) members are offered a 25% discount on accommodation at 'The Park'. (NZFWDA membership is \$30 inc GST)

Contact Information

For accommodation information please contact [The Park Travellers Lodge](#)

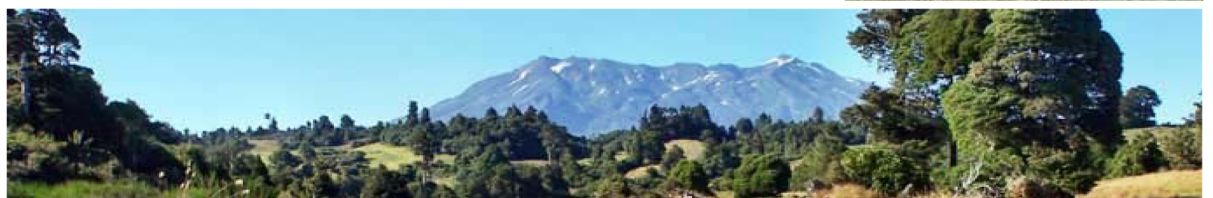
Telephone 0800 800 491

Electronic mail

General accommodation Information: bookings@the-park.co.nz

4x4 event information info@4x4nationalpark.co.nz and to request a registration form.

Webmaster: web@4x4nationalpark.co.nz



Copyright : 4x4 National Park All rights reserved.

(Continued from page 7)

ryone made it including Phil in his double cab Toyota on AT tyres. This was a fun bit of driving made more so as it was a new track for most.

From Curtis Flat we climbed up a gorse lined track to enjoy some magnificent views of the Tasman Sea and Pauatahanui Inlet, again this was new territory for most of us.

At about 3.00pm we headed down the Blowfly enroute to the Wainui stream, fully expecting to be out and airing up at about 4.30pm, but three fallen trees delayed our finish to about 6.30pm. We had cleared 3 fallen trees in the morning that took no more than 30-40 minutes all up. But going down to the Wainui stream a tree and root ball took 1.5 hours to clear. This really was a heavy sucker and took various winch angles to get the necessary leverage to eventually roll it off the track without taking Grant's FJ40 with it. As a driver with little winch experience this was an interesting learning exercise.



Once in the stream we had two more substantial trees to clear before driving up the southern Zig-Zag and out via the Hydro and Puketiro Roads. The small group meant we travelled easily, some new tracks, sunshine and bit of exercise clearing trees, all combined to make a great day.

Thanks to all participants, and Grant in particular, for making himself available to be trip leader over the holidays.

Dennis McKinlay

Presidents Piece

Happy New Year to you all, don't know about you but I have been lucky enough to enjoy a real summer, swimming at the beach, BBQ in the evening and plenty on chat into the night. I haven't been on a club trip for a few weeks but did get a chance to get the Prado out on the beaches north of Otaki. Had a great drive along to the Ohau River where we did some bird watching (the type with wings) and some beach combing after the Christmas storm.

The committee have had their first meeting of the year, we discussed all the general items but also spent some valuable time working through some goals we would like to achieve over the next twelve months. Trip planning is always on the agenda and I would like you all to think about how this might be improved, we seem to double up some weekends and nothing others. This will be discussed at club night and we want members input.

Some interesting trips coming up, not only CCVC but also the NZFWDA arranged trip based at National Park in early March and a few school fund raisers in the Wairarapa, usually not challenging but a great day out driving over tracks rarely open to the public.

Club night will be a good one with Mike Stevens speaking on driving up exploding volcano's in Iceland, sounds like a blast. See you all there.

Ralph Dobson - CCVC President

CLUB CLOTHING - ORDER FORM



OIL SKINS - Complete clothing requirements (size, quantity and totals), together with delivery and payment details and post, fax or email to:

Far South Clothing Company
 126 Clyde Street, Invercargill 9010
 Tel 0800 327 768 Fax (03) 208 9012
 Email: sales@farsouth.co.nz

OTHERS - Complete clothing requirements (size, quantity and totals), together with delivery and payment details and post, fax or email to:

A1 Apparel, Embroidery & Screenprint ltd
 325 Jackson St, Petone, Lower Hutt
 Tel (04) 568 6226 Fax (04) 568 2530
 Email: sales@a1embroidery.co.nz

Cross out not applic L = Ladies	DESCRIPTION	SIZE						QTY	Price \$	TOTAL \$
		S 8	M 10	L 12	XL 14/ 16	XXL 18/ 20	3XL 22			
86F	Vest, black lined oil skin								99.00	
tba	Forrester Jacket, black lined oil skin								tba	
P3308 L P29322	HERITAGE collar Polo Shirt - Navy/silver								37.69	
P3308 L P29322	HERITAGE collar Polo Shirt - Graphite/Black								37.69	
P3308 L P29322	HERITAGE collar Polo Shirt - Black/silver								37.69	
P3308 L P29322	HERITAGE collar Polo Shirt - Sand/black								37.69	
4015	Cap Black								24.75	
4015	Cap Navy								24.75	
Ice T	Cotton T shirt, Navy or Charcoal								19.15	
Ice T	Cotton T shirt, Black or Stone								19.15	
Delivery, to be arranged at time of order										
Cheque/Credit Card charge value										

ORDER AND DELIVERY DETAILS

Ordered by: _____ Date: _____

Delivery Address: _____

Phone: _____ Fax: _____

PAYMENT DETAILS

Please find enclosed: CHEQUE (A1 Embroidery & Screenprint Ltd)
 CHEQUE (Far South Clothing Company)
 Please charge my credit card: BANKCARD VISA MASTERCARD

CARD NUMBER:

NAME OF CARDHOLDER: _____ EXPIRY DATE: _____

SIGNATURE: _____



G. Guy Motors

4x4 Service Centre

4WD SPECIALISTS NZ

- 4x4 Accessories -
- Servicing and Repairs -
- Warrant of Fitness -
- Tyres -



- Phone: 04 472 2020
- Email: gguy.motors@gmail.com

gguymotors.co.nz

41 Hutt Rd, Thorndon, Wellington, NZ

4WD/RV/SUV Tyres never looked so good and worked so well



www.coopertyre.co.nz

CONFIDENCE. PERFORMANCE. MILEAGE.

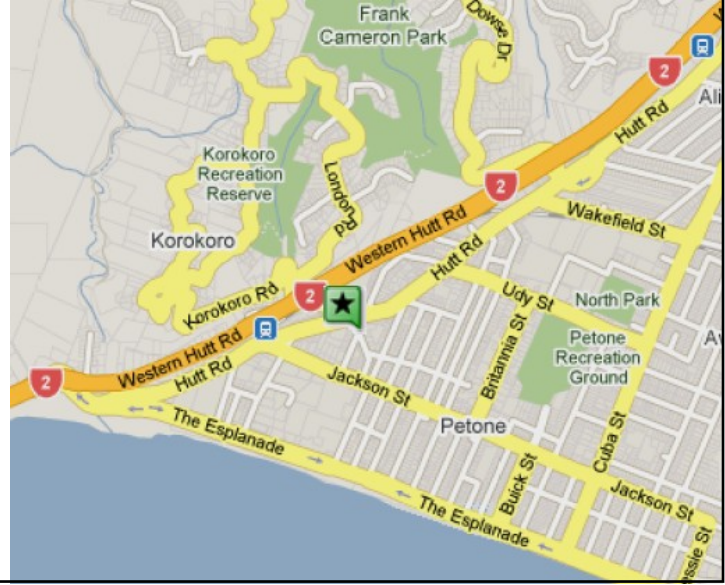
Autolign

THE STEERING & SUSPENSION SPECIALISTS

For all your suspension and steering requirements contact:

12 Petone Avenue
Petone
Lower Hutt

Ph. 586 7413



STEEL & TUBE

CHAIN AND RIGGING

9 Seaview Road
Seaview

Ph 570 3830
Fax 570 3881

www.steelandtube.co.nz

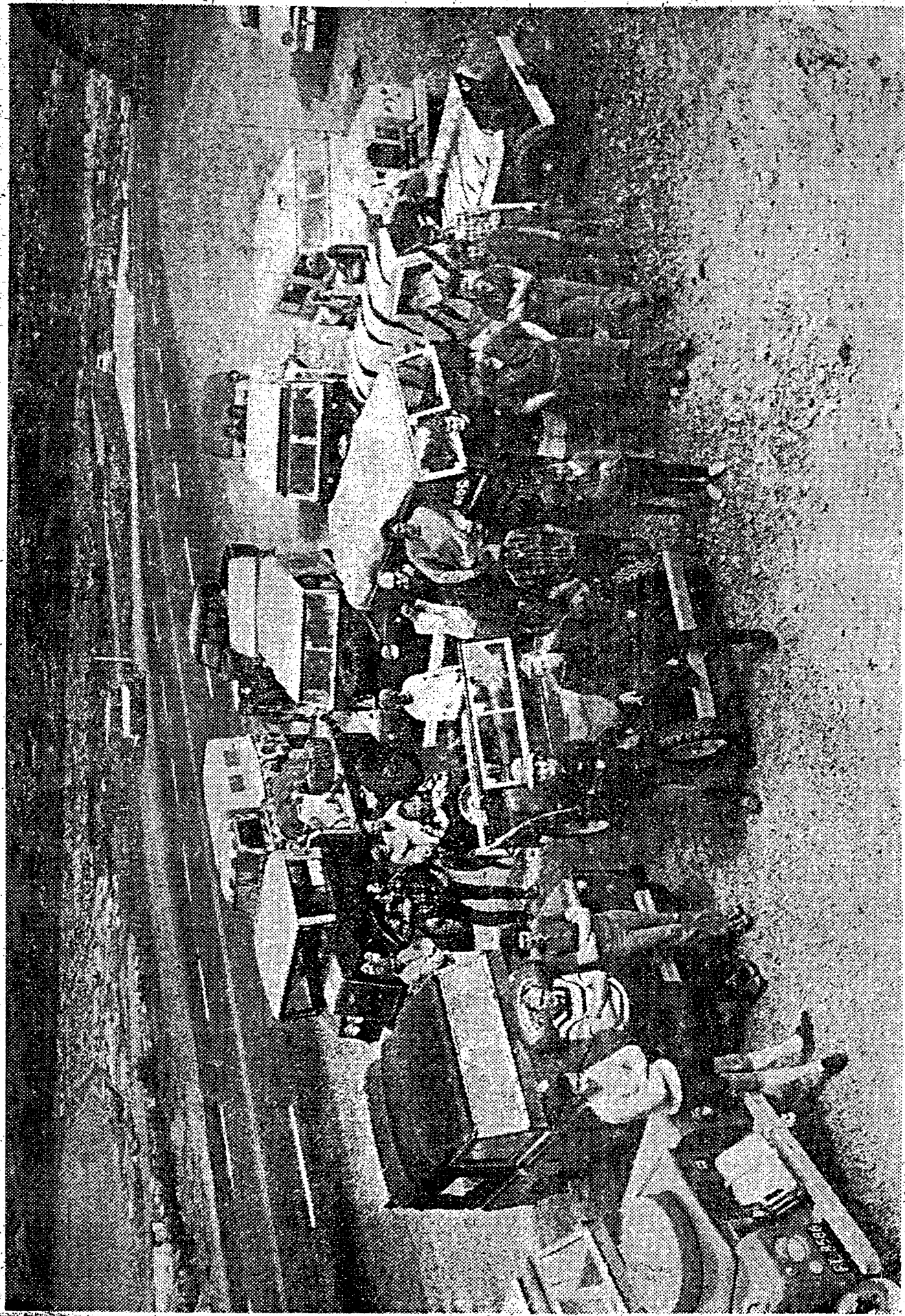
Chain & Rigging
OUR SERVICE - YOUR SUCCESS

LIFT MASTER FREIGHT MASTER

HEIGHT MASTER MARINE MASTER LWD MASTER

PWB ANCHOR GUNNEBO LIFTING SpanSet PETZL

STEEL & TUBE
CHAIN AND RIGGING



CLUB MEMBERS HOLD FIRST EXCURSION

THE RECENTLY formed Wellington Cross Country Vehicles Club held its first excursion yesterday, a trip around the coast from Orongorongo Station. The club will hold rallies and trials for "off the road vehicles" and also hopes to assist in civil defence. The picture was taken at the start of their trip on top of the Wainuiomata Hill.

CCVC are again involved in this project assisting the Plimmerton Rotary in running this trip on the 19th February 2011, we do require at least 25-30 vehicles but more would be good as the Rotary are selling seats as part of the trip. We to this end will benefit financially as a club with all funds raised going towards our 40th celebrations in June - more member vehicles = more funds raised for us and the cause. Lunch is provided for CCVC members on this event, and the tracks are very different from last year!

The event is classed as a family shiney event with tyres AT so scenic with some challenge for the tuffer class, on our recce all tracks were driven by one member in 2wd, it was dry and firm.

To register please send me an email advising that you will be there and how many seats you are able to offer on the day (polcatz@gmail.com), then go to the rotary fundraiser site www.4x4safari-rotaryclub.co.nz/ and register under '**Cross Country Club Official cars**' at the bottom of the list, I will advise the meeting point and task allocations required from here, and look forward to seeing a good list of members as the rotary are expecting to have around 100 vehicles this round.

4x4 Wellington Fundraiser for Shiny - Rotary Club of Plimmerton- Proceeds Wellington Free Ambulance

4x4 Safari

Adventure Fundraiser

Take the Family Day Out

[Print Page](#)

Hosted by the
Rotary Club of Plimmerton

This event will equally support the
Wellington Free Ambulance
Westpac Rescue Helicopter - Life Flight
Rotary Community Projects & Awards



Saturday 19th February 2011 - Day event with Rotary provided lunch [Bookmark this site](#)

Discover the Panoramas and natures wonder close to home

.....- **on the hills above Pauatahanui - Judgeford and Upper Hutt**

Start at the Airstrip, Battle Hill Farm Park, at the Pauatahanui end of Paekakariki Hill Road, through Transmission Gully, drive inland over hills that give stunning views as far as the eye can see, across Moonshine Road, and finishing at the bottom of Haywards Hill, SH58 at the Transit owned paddock in McDougall Crescent for prize and award giving.

Bring your family, a drink, for while in transit and your camera.

This is not a 4WD Rally, no racing or obstacles, just roads and tracks normally off limits to private vehicles. Carefully selected and supervised by experts in off-road driving. This will suit all those people with 4WD vehicles who have always wanted to try off-road but in a safe way **OR a special NEW route for the more experienced with suitable vehicles.**

SNATCH MASTER

high elongation nylon recovery straps

Minimum breaking load 8,000 Kgs
Offers similar elongation to nylon rope,
but requires less storage space.

Described by users in trials as 'magic,
the best product I have ever used !'

Manufactured by **COOKES**
in
association with **DONAGHYS**
PERFORMANCE FIRST

100% New Zealand made

Bring in your club membership card and
receive 15% discount off our Snatch
Strops, Shackles and Chains.

Standard lengths 6.0 metres & 9.0 metres
with special lengths manufactured to order in
either our Auckland or Christchurch factories.

**AUCKLAND
FACTORY**

6-10 Greenmount Drive
East Tamaki
09 274 4299

**WELLINGTON
BRANCH**

2 Udy Street
Petone
04 568 4384

COOKES & TWL

BRANCHES THROUGHOUT NEW ZEALAND

**F
r
o
m

t
h
e

a
r
c
h
i
v
e
s**

From the Canterbury Land-Rover Owners Club Newsletter comes the following - latest prices available from Amuri Motors in Christchurch as at November 1975.

88" Truck Cab	\$5789	109" Chassis Cab	\$6290
88" Soft Top	\$5910	109" Hard Top	\$7100
88" Hard Top	\$6400	109" Station Wagon	\$9300

For those of you able to pay \$17,500 - one Range Rover
If these prices put you off, the new Rolls Royce is worth
\$39,500, while a Lamborgine Sports is only \$39,000!

WANTED - For the building of Club Winches etc

Any available equipment to make winches

Worm drive units

Reduction Boxes (ideally 40-1 reduction drive)

drums

wire rope

If you can help with any of these, phone George
Bean - W-O-M 6689 or Bruce Mulhare W-O-M 6283

STOP PRESS

Due to an oversight in the publication of the "Deadwood 75"
Results, there was a third placing in the Modified over 3,000
Class, and this went to Richard Taylor in his Toyota.
Our apologies to Richard for not including this placing with
the final results.

FOR CLUB CALENDAR - SEE OVER.....

Our Tailend Charlie Nissan owner has finally seen the light
and, in the tradition of true quality, has purchased a Range
Rover. Goodbye Japanese Jazz, spare pocket money, balloon
tyred trike, - British Leyland bring on the spare parts, our
John is a mobile "Ranger".

For 2011 Toyota New Zealand is celebrating the 60th anniversary of its legendary Land Cruiser.

The Land Cruiser is an iconic model for Toyota and has been part of New Zealand's forestry, farming and off-road heritage for nearly six decades. As a key part of its celebrations, Toyota is challenging television presenter Marc Ellis to drive a new FJ Cruiser, which is unashamedly a tribute to the original FJ40, from Cape Reinga to Bluff – entirely off tar sealed roads.



The adventure dubbed 'Top to Bottom – Off road' is a tribute to the legacy Land Cruisers have forged after 60 years, says Neeraj Lala, Toyota's Assistant General Manager of Marketing and Product.

"In many ways, this trip reflects the celebrated Kiwi spirit of giving things a go. Toyota believes 'if you dream it, you can do it', and we'd like New Zealanders the length of the country to help us make the dream a reality. Perhaps they can open up a private track or suggest a secret route the vehicles can use to avoid a road, offer a splash of petrol if things get tight in the back country, or they might just like to invite some weary travelers in for a hot cuppa."

Ellis will set off down Ninety Mile Beach on 21 February. Meeting up with the intrepid travelers at points along the way will be a fully restored Kiwi classic – a late 1970s FJ40 Land Cruiser which Toyota bought from a customer after a long search for the classic and will give away to someone who helps the team achieve its goal.

"It's quite fitting for the new FJ Cruiser, which un-mistakenly descends from some of the most iconic Land Cruiser models, to be the vehicle to attempt this epic journey," says Neeraj Lala.

Toyota expects the team to take 16 days of driving to reach the southern tip of New Zealand, via seven checkpoints. Ellis is set to meet national and local legends on the way.

Ellis has been challenged to only use back country roads, farm trails and tracks. If he wants to go on tar seal he has to earn credits to do so by meeting further challenges.

The vehicles will head south on the North Island's western side as far as Taranaki, traverse the island to Hawke's Bay, and on to the South Island via Wellington. From Picton, the FJ Cruiser will go through the centre of the South Island high country and the heart of Otago.

The old FJ40 was restored at Toyota's Signature Class facility at Thames. Neeraj Lala says Toyota's specialists normally only refurbish late-model cars for the premium used car market. In the spirit of this trip, we asked our team in Thames for a favour. They jumped at the chance to turn their expertise in paint, panel and mechanical servicing to totally retransform the 1970s FJ40 into a near new vehicle once again."

The adventure team looks forward to saying 'giddyay' to the public at the seven checkpoints (see below). To follow daily podcasts from the road and to offer Marc help on his journey visit www.toptobottom.co.nz.

Top to Bottom, Off Road itinerary

Start: Cape Reinga – Monday, 21 February

Checkpoints:

1. Auckland, 22 February (Giltrap City Toyota, Grey Lynn)
2. New Plymouth, 24 February (Tasman Toyota)
3. Hawke's Bay, 28 February (Hawke's Bay Toyota)
4. Wellington, 2 March (Rutherford & Bond Toyota)
5. Christchurch, 4 March (Miles Toyota)
6. Dunedin, 6 March (Cooke Howlison Toyota)
7. Invercargill, 8 March (GWD Toyota) following journey to Bluff.

There will also be an open day at Toyota's Palmerston North headquarters on 26 February.



TINUI SCHOOL

Building on Beginnings

COASTAL 4 Wheel Drive TOUR NO 1

SATURDAY FEB 19TH 2011

The tour will cover country in and around the Castlepoint and Tinui districts, on the “hospitable” Wairarapa coast.

This 4WD tour is intended as both a family affair and a “shiny” trip, with most 4WD’s, fitted with good tyres, expected to comfortably handle the likely conditions.

The tour will start at approximately 60 meters above sea level rising to approx 440 m.a.s.l, taking in extensive and historic farmlands, settled from the late 1840’s.

It will follow, in part, the traditional trade routes (bullock trails) toward Mataikona, then south through the reknown Castlepoint Station, before returning to finish at the historic Tinui School and settlement, for a relaxed and informal BBQ dinner.

Cost: \$120 per vehicle
(Lunch provided, for four persons including driver)

Entries Close: 10th February 2011

Limited: to 120 vehicles

Tyres: Good condition. More aggressive tyre with at least 50% tread life left will cope with the basic route

Other: No dogs
No firearms
Time may allow for a swim along the way, with parental supervision

Entry Forms Attached

Further enquiries:

Tony (OB) O’Boyle, Marangai RD9 Masterton. (06) 372 5859.
Marangai@farmside.co.nz

Scott White head (06) 372 6662
Mark (mossie) Mossman (06) 372 3823

Registration form is downloadable from the club website or available from the editor on newsletter@ccvc.org.nz

Trip Categories

The following trip category definitions, plus any *additional* requirements specified on individual Trip Information Sheets, will be enforced, for safety reasons. Trip Leaders will turn away vehicles or drivers that do not comply. The vehicle and driver requirements given here are a summary of the full requirements listed on the club website. Please refer to www.cvc.org.nz for a definitive list of requirements.

For all Categories: All open or soft-top vehicles must have a roll bar or roll cage.

All Categories **other than Family 4X4** are for members only. Prospective members and visitors are welcome if they can demonstrate to the Trip Leader they are members of another club and have adequate experience.

Family 4X4:

Description: Family trip. These trips will be straightforward and will usually include some degree of guidance in driving techniques as necessary.

Drivers: Particularly suited to family outings and drivers new to off-road driving, this category is also open to anybody who enjoys this style of trip.

Members: Anybody is welcome, especially prospective new members.

Vehicles: An important objective is minimal challenge and minimal risk to vehicles. Club safety equipment is mandatory for club members; it is not mandatory for non-members although it is recommended for vehicles once their drivers have participated in one or two trips. All open or soft-top vehicles must have a roll bar or roll cage.

Shiny 4x4:

Description: More difficult family trips, for shiny wagons and drivers *with some experience* who want more challenge and don't mind minor bush marks etc on their vehicles.

Drivers: Must have some experience, particularly important are experience in stopping, failed hill climbs, steep descents and sidelings. Club members must have completed CCVC Driver Training and participated in at least 2 Family 4X4 trips after becoming a member.

Vehicles: Vehicles must have mud tyres, tow hooks and all the required equipment per the club's document "Vehicle Safety & Equipment Inspections". This applies to all vehicles on the trip.

Club 4x4:

Description: Challenging trips, for experienced drivers. There will be steep and challenging terrain, modestly deep water and mud, likelihood of bush marks.

Drivers: Must have experience beyond that required for Shiny 4x4 trips, including water crossings and vehicle recovery. Club members must have participated in at least 2 Shiny 4X4 trips.

Vehicles: Must have mud tyres, tow hooks and all the required equipment per the club's document "Vehicle Safety & Equipment Inspections". This applies to all vehicles on the trip. Accessories such as high-lift jacks, externally mounted spare tyre, bush bars and multiple jacking points are of advantage. Winches are often particularly useful. Generally a short wheelbase vehicle is better suited for the tight tracks.

Hard Yakka:

Description: Difficult trips with very challenging terrain and surfaces, where winching, digging, and vehicle damage are all a possibility!

Drivers: Experienced drivers only, must have approval of Trip Leader. Club members must have participated in at least 3 Club 4X4 trips.

Vehicles: As per the Club 4x4 category. In addition, a roll-bar or roll-cage is recommended for all vehicles on Hard Yakka trips. Often a winch is mandatory on a Hard Yakka trip; this will be specified on the Trip Information Sheet

Date	Name	Organiser	Category	Place	Status	Notes
February 2011						
Saturday 5th	Odlins Road - SWB Only - Bookings Required	Charles Odlin	Club 4X4	Odlin's Road	Confirmed	
Saturday 5th	The Re-run Again	Grant Purdie	Shiny 4X4 / Club 4X4	Akatarawa Forest	Confirmed	Bookings appreciated.
Sunday 6th	Orongorongo Adventure in Feb - bookings required. Contact Morris (04) 566 - 6197 or (021) 629 - 600	Morris Jury	Family Shiny	Orongorongo area		
Monday 7th	CCVC Trip Leaders Forum	Charles Odlin	Meeting - 19:30	Petone Working Men's Club, Udy St		
Tuesday 8th	CCVC Web Project Meeting	Murray Wills	Meeting - 19:30	Maxsys Limited, Level 2, Davis Langdon House, 49 Boulcott Street, Wellington,		
Wednesday 9th	Club Night - All Welcome	Ralph Dobson	Meeting - 19:30	Petone Working Men's Club, Udy St		
Saturday 12th	GWRC Sunset Tour #2 - Club Members only - Bookings Essential	Paul Adams	Shiny 4X4			Bookings essential
Saturday 19th	GWRC Sunset Tour #2 - Back up date - Club Members only - Bookings Essential	Paul Adams	Shiny 4X4	Akatarawa Forest		Bookings Essential
Saturday 19th	Rotary Fundraiser - Bookings essential - Non members should book with the Organising Rotary Club - http://www.4x4safari-rotaryclub.co.nz/	Stewart Burrell	Shiny 4X4	Akatarawa Forest		
Wednesday 23rd	CCVC Committee Meeting	Ralph Dobson	Meeting - 19:30			
Saturday 26th	Rotary Fundraiser - Back up date - Bookings Essential - Non members should book through the organising Rotary Club	Stewart Burrell	Shiny 4X4	Akatarawa Forest		
Sunday 27th	CCVC Training Day for Prospective Members	Steve Mercer	Family Shiny	Find out when you book.		

March 2011

Tuesday 1st	Safety Sub Committee Meeting	Murray Taylor	Meeting - 19:30	-tba-		
Saturday 5th	Karapoti Classic Cycle Race in Akatarawa forest	-tba-	Event	Akatarawa Forest	Confirmed	
Sunday 6th	Maritime archaeological Society - Members Only - Bookings Required	Ray Harkness	Shiny 4X4	Wellington South Coast		
Wednesday 9th	Club Night - All Welcome	Ralph Dobson	Meeting - 19:30	Petone Working Men's Club, Udy St		
Saturday 12th	Orongorongo in March - Bookings required for non members	Morris Jury	Family Shiny	Orongorongo area		
Saturday 26th	Sutherlands Track Weekend - Details to come	-tba-	Shiny 4X4	Sutherland's Track		

April 2011

Sunday 3rd	GWRC Akatarawa Tag a long - Non Members should book with the GWRC Summer Programme	David Coxon	Shiny 4X4	Akatarawa Forest		
Sunday 10th	GWRC Tag a long - Rain Off Date	David Coxon	Shiny 4X4	Akatarawa Forest		
Wednesday 13th	Club Night - All Welcome	Ralph Dobson	Meeting - 19:30	Petone Working Men's Club, Udy St		
Sunday 17th	Orongorongo in April - Bookings required for Non Members	Morris Jury	Family Shiny			
Saturday 23rd	Zuki Central 2011 Suzuki only event Easter 2011	zukicentral@gmail.com	Family Shiny	Find out when you book.		



www.wgtn4wd.co.nz



Repairs and maintenance of all
off road vehicles.

Modifications a speciality.

CCVC safety inspections

Contact Carl at

Wellington 4WD Specialists Ltd
26 Hawkins Street
Lower Hutt

Phone (04) 976 5325, Fax (04) 976 5313
or 027 201 2529

Cross Country Vehicle Club (Wellington) Inc
PO Box 38-762
Te Puni 5045
Wellington



tread lightly!
LEAVING A GOOD IMPRESSION

